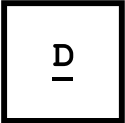


# FABRIC OPTIONS

DE LA ESPADA

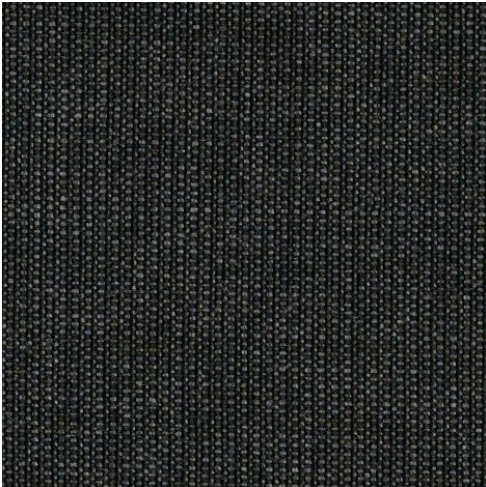
**RANGE**



**CANVAS 2**

Canvas is a refined woollen textile designed by Giulio Ridolfo. Inspired by women's couture, it offers a great richness of colour, and is extremely hardwearing at 100,000 rubs Martindale.

90% NEW WOOL WORSTED/10% NYLON



CANVAS 2 174



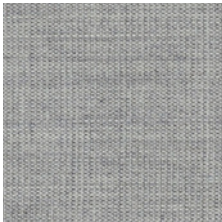
CANVAS 2 114



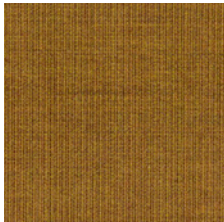
CANVAS 2 654



CANVAS 2 794



CANVAS 2 124



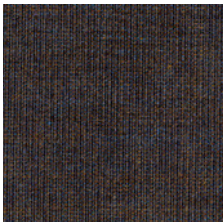
CANVAS 2 424



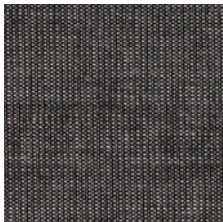
CANVAS 2 684



CANVAS 2 364



CANVAS 2 764



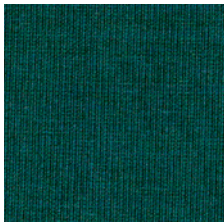
CANVAS 2 154



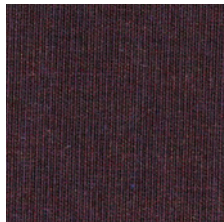
CANVAS 2 734



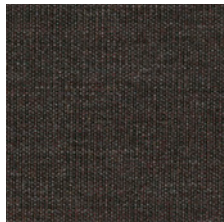
CANVAS 2 974



CANVAS 2 984



CANVAS 2 694



CANVAS 2 374

## RANGE

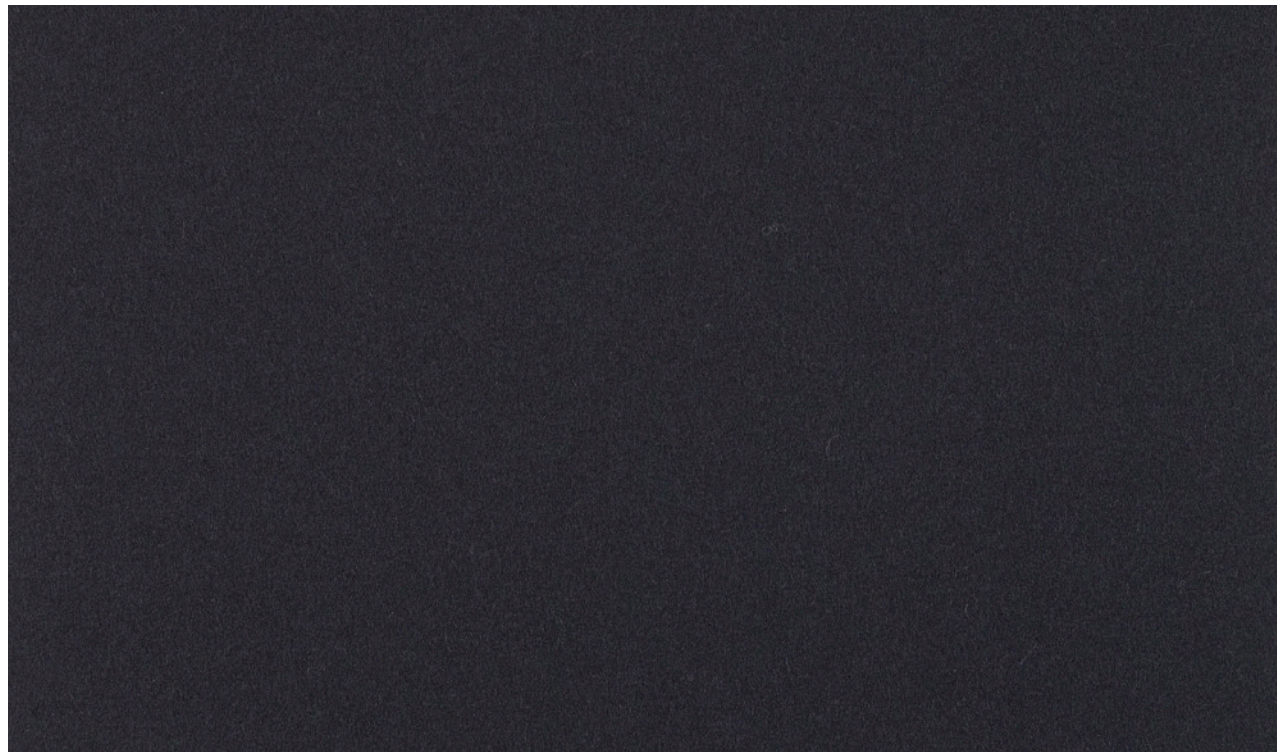
A

D

### DIVINA 3

Divina 3, designed by Finn Sködt, has a surface that is smooth, directionless, and uniform in a manner that is similar to the properties of felt. It is very hardwearing at 45,000 rubs Martindale.

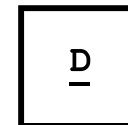
100% NEW WOOL



DIVINA 3 191



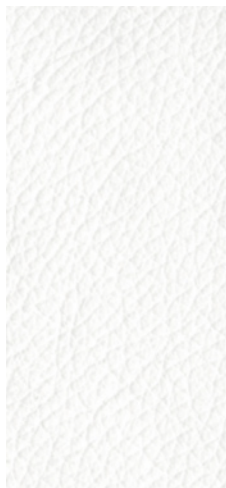
## RANGE



### FINISHED LEATHER

Our finished leather is soft, supple, and hardwearing. A corrected grain cow hide leather, it is water resistant and easy to clean making it suitable for a wide range of applications.

#### FINISHED LEATHER



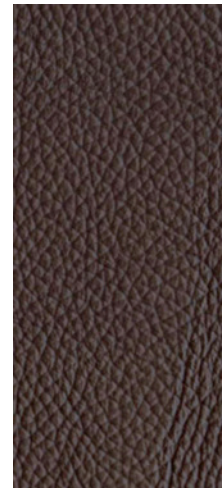
IVORY



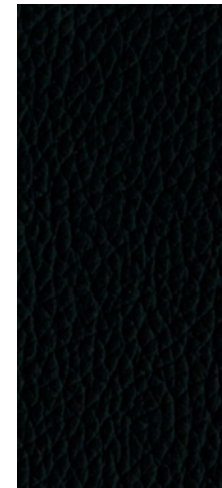
DUNE



CHAI



CHOCOLATE



LIQUORICE



FOG

## RANGE

A

D

### LINEN

Linen is made of natural fibres from the stems of a flax plant. Our pure linen has an abrasion resistance of 28,000 rubs Martindale.

100% LINEN



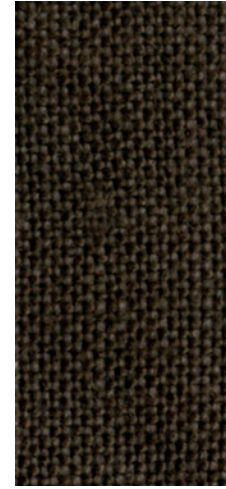
SANDSTONE



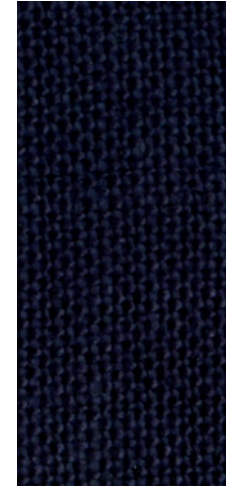
SAHARA



EUCALYPTUS



BARK



BLUEBERRY

### LINEN COTTON

Our Linen Cotton blend has a pronounced rustic slub weave that creates a rich texture. It has an abrasion resistance of 22,000 rubs Martindale.

70% LINEN/30% COTTON



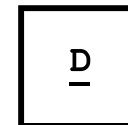
OATMEAL



BLUEBELL



## RANGE



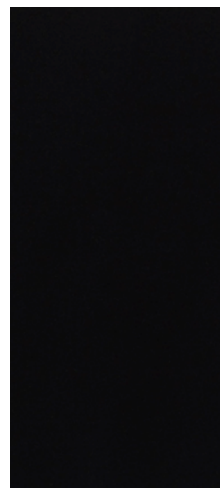
### HARALD 3 VELVET

Harald is a closely-woven, short-pile velour with a luxuriously soft texture and rich colour. Designed by Raf Simons and Fanny Aronsen, Harald is hardwearing at 100,000 rubs Martindale.

100% COTTON



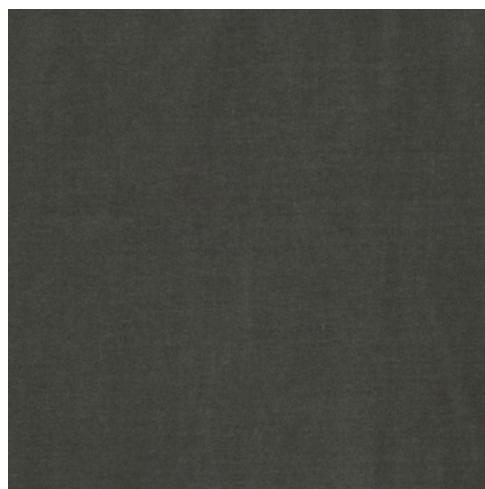
HARALD 3 212



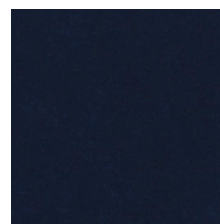
HARALD 3 192



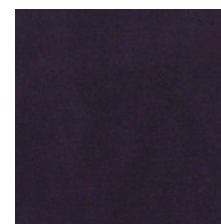
HARALD 3 182



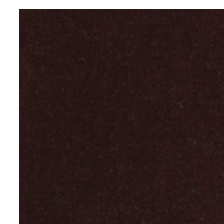
HARALD 3 242



HARALD 3 792



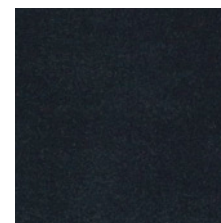
HARALD 3 692



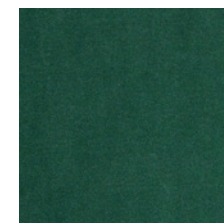
HARALD 3 382



HARALD 3 772



HARALD 3 982



HARALD 3 952

## RANGE

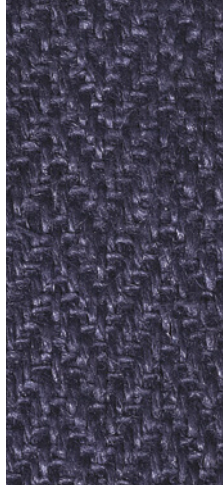
A

D

### HERRINGBONE LINEN

Linen is made from the natural fibres of a flax plant. This luxury upholstery linen features a beautiful herringbone weave, and has an abrasion resistance of 25,000 rubs Martindale.

100% LINEN



HERRINGBONE  
LINEN INK



HERRINGBONE LINEN CHARCOAL

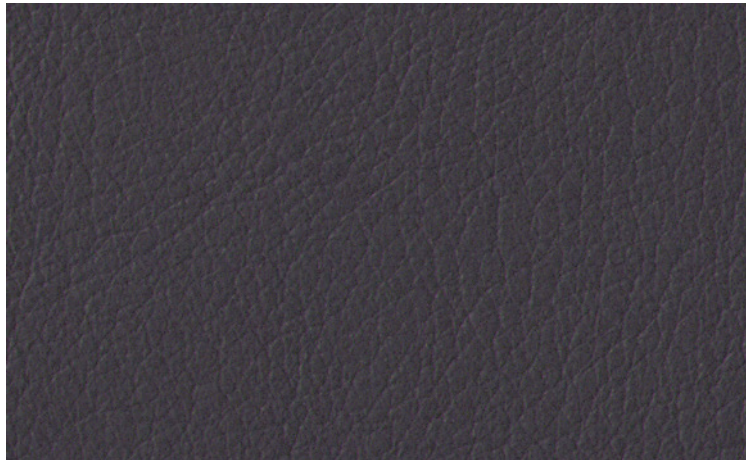


HERRINGBONE LINEN NATURAL

### NAKED LEATHER

Our naked cow hide leather is naturally resistant to tears and punctures. A top grain leather, it is unfinished so will age naturally in response to its environment, developing a beautiful patina over time.

NAKED LEATHER



BLACK NAKED LEATHER



BROWN NAKED LEATHER



## RANGE

A

D

### VISCOSE BLEND

Our Viscose Blend fabric offers a sumptuous soft texture and outstanding durability at 55,000 rubs Martindale.

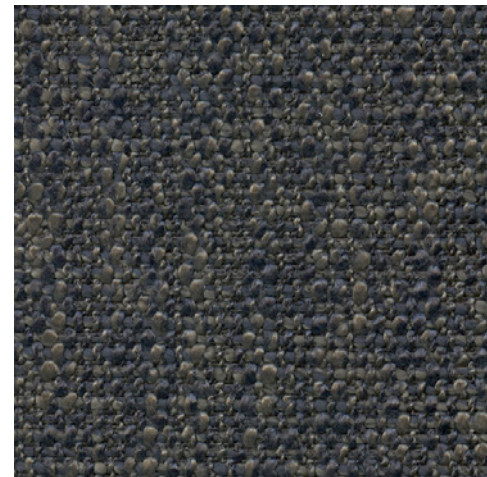
9% COTTON/51% POLYESTER/30%  
VISCOSE



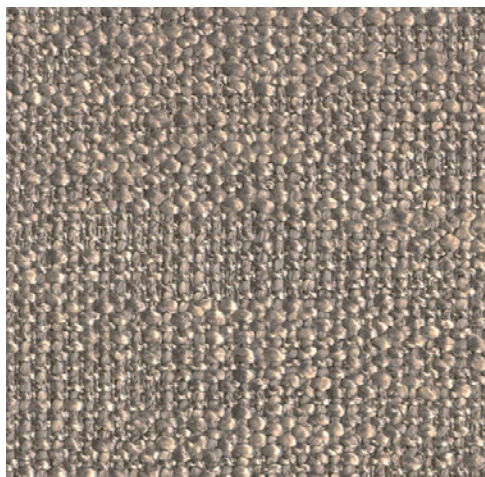
ALMOND



BROWNSTONE



SPRUCE



SMOKE



MARZIPAN



## RANGE

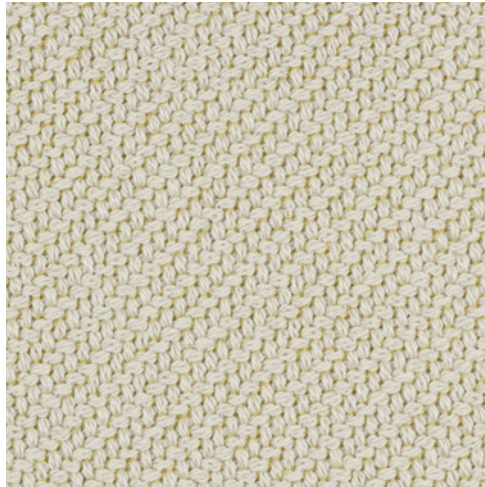
B

D

### CODA 2

Designed by Norway Says & Per Bjørnsen, Coda is woven in two layers with two colours to highlight its three-dimensional character. This tactile fabric is extremely hardwearing at 100,000 rubs Martindale.

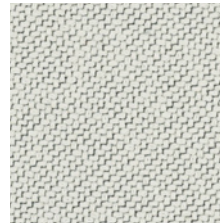
90% NEW WOOL/10% NYLON



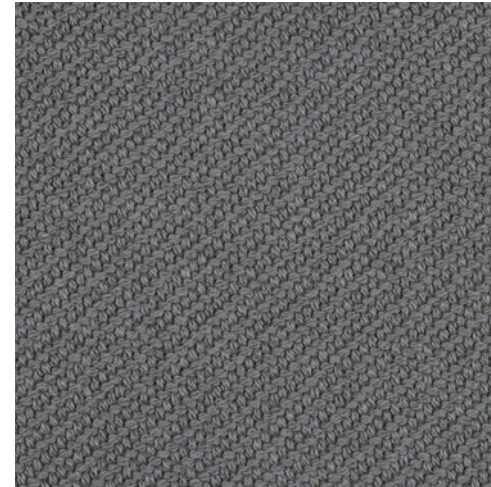
CODA 2 422



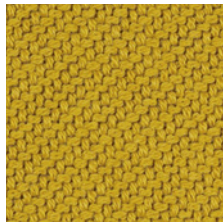
CODA 2 232



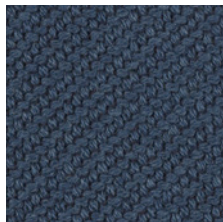
CODA 2 100



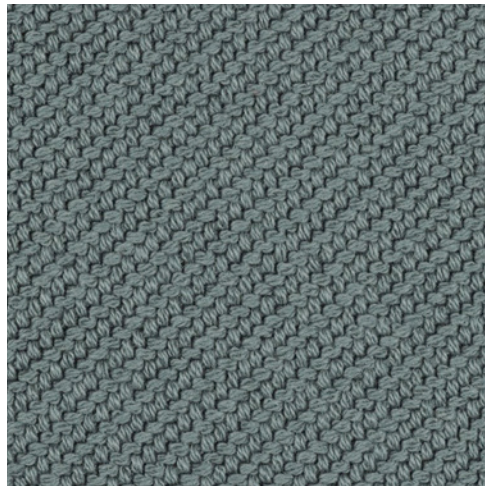
CODA 2 182



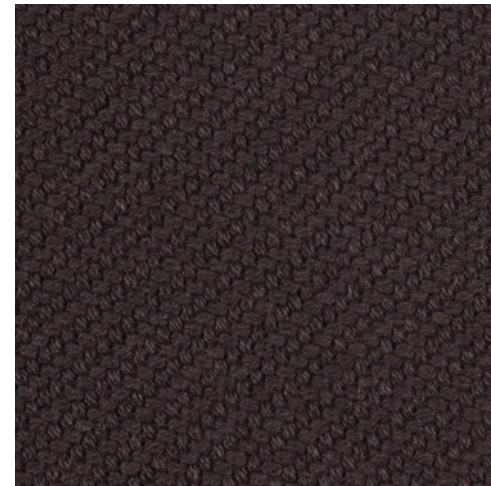
CODA 2 442



CODA 2 762



CODA 2 962



CODA 2 382



## RANGE

B

D

### SUNNIVA 2

Designed by Fanny Aronsen and Raf Simons, this fabric combines two tones of wool, woven in a fine, flat, tweed-like pattern with a glossy top note. It is very hardwearing at 50,000 rubs Martindale.

58% NEW WOOL/25% VISCOSE/8%  
LINEN/5% NYLON/4% POLYESTER



SUNNIVA 2 236



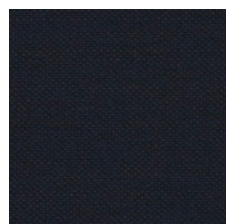
SUNNIVA 2 717



SUNNIVA 2 811



SUNNIVA 2 152



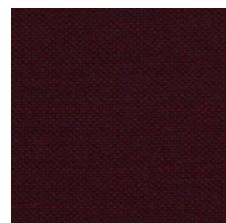
SUNNIVA 2 192



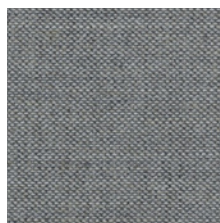
SUNNIVA 2 1079



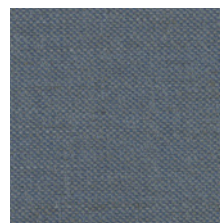
SUNNIVA 2 143



SUNNIVA 2 662



SUNNIVA 2 242



SUNNIVA 2 752



SUNNIVA 2 132



## RANGE

B

D

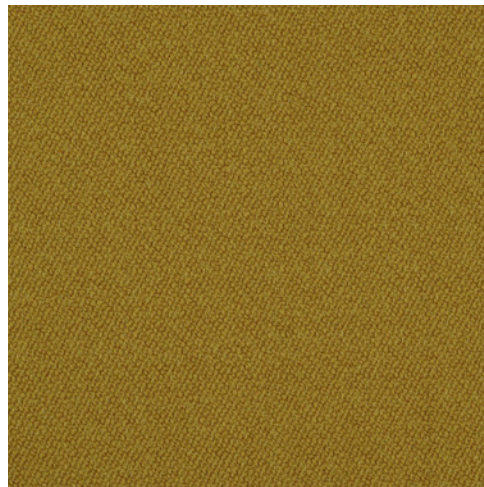
### VIDAR 3

Woven from bouclé yarns with a regular loop size, Vidar has a large-grained texture, a gentle satin surface finish, and great depth. Designed by Raf Simons and Fanny Aronsen, it is extremely hardwearing at 100,000 rubs Martindale.

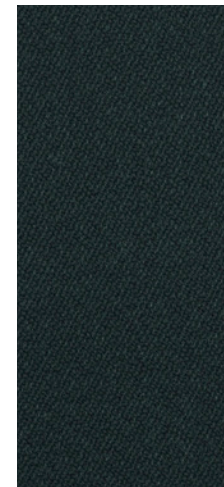
94% NEW WOOL/6% NYLON



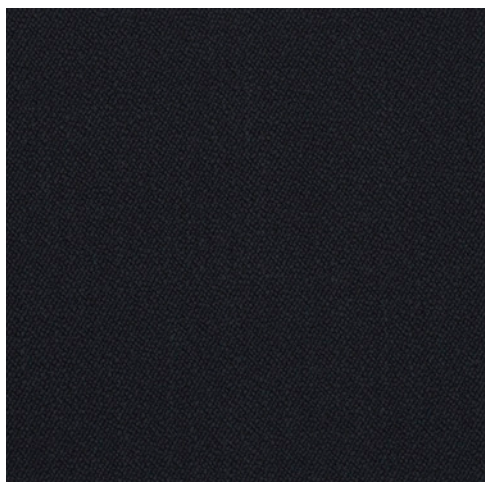
VIDAR 3 1511



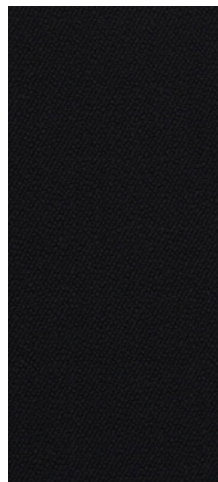
VIDAR 3 472



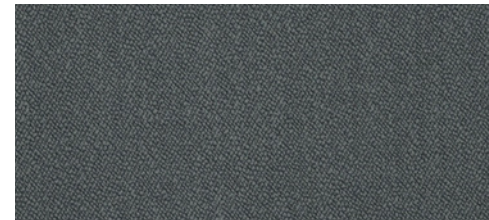
VIDAR 3 1062



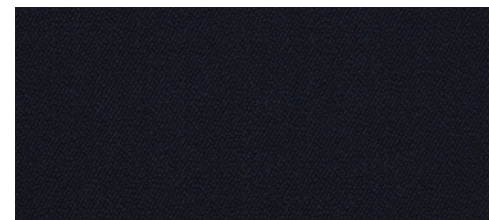
VIDAR 3 182



VIDAR 3 1880



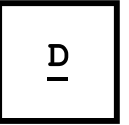
VIDAR 3 152



VIDAR 3 554



## RANGE



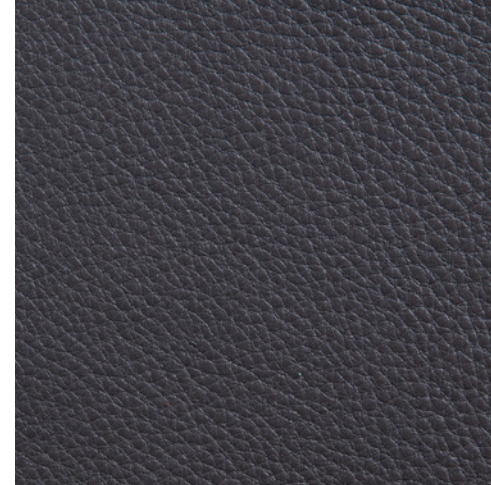
### ELMO RUSTICAL

A full grain aniline leather from Scandinavian cattle, Elmorustical is soft and natural, offering outstanding comfort. The distinct features of the natural hide are clearly visible, lending each piece individuality and character.

ANILINE LEATHER



ELMORUSTICAL VIII 99991



ELMORUSTICAL VIII 91089



ELMORUSTICAL VIII 93287



ELMORUSTICAL VIII 22679